

A733 – STAINLESS STEEL BALL VALVE



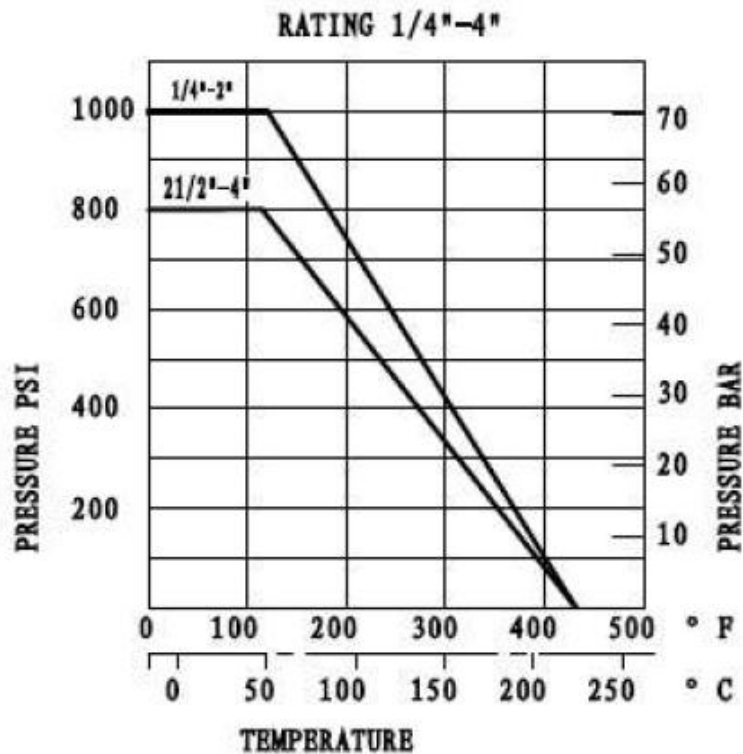
Properties

- BSP threaded connection
- Blow-out proof stem
- Full port
- Locking device
- 2 pc execution
- DIN M3 length
- With ISO5211 mounting pad



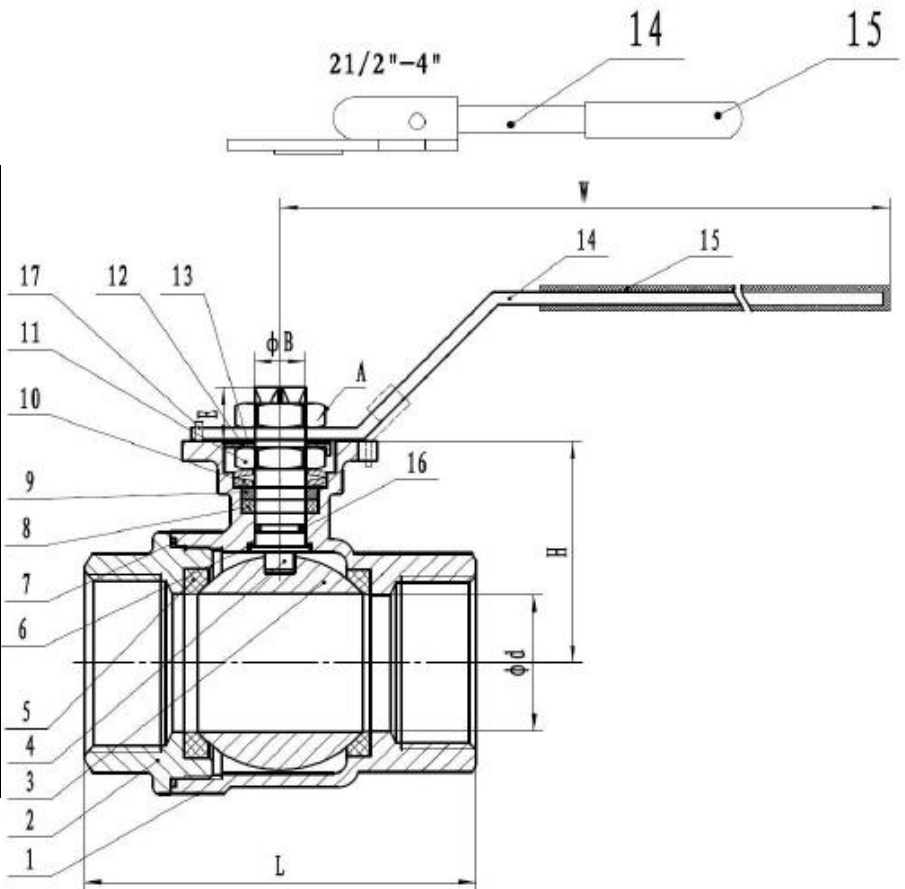
Application

Chemical and pharmaceutical industries, all medium suitable to the material quality of the product.

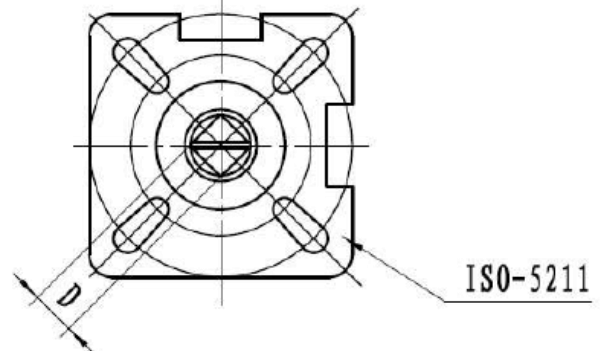


Materials and size

Item	Description	Materials
1	Body	CF8/CF8M
2	Cap	CF8/CF8M
3	Ball	SS304/SS316
4	Stem	SS304/SS316
5	Seat	PTFE
6	Thrust washer	PTFE
7	Body seal	PTFE
8	Stem packing	PTFE
9	Gland ring	SS304
10	Spring nut	SS304
11	Stem nut	SS304
12	Against pine pad	SS304
13	Washer	SS304
14	Handle	SS304
15	Plastic cover	Plastic
16	O-ring	VITON
17	Stop pin	SS304



DN	ØD	L	H	D	E	B	W	ISO5211
1/4"	11,6	60	36,5	9	9	12	143	F04/03
3/8"	12,5	60	36,5	9	9	12	143	F04/03
1/2"	15	75	37,8	9	9	12	143	F04/03
3/4"	20	80	42,5	9	9	12	143	F04/03
1"	25	90	45	11	11	14	163	F05/04
1-1/4"	32	110	51,5	11	11	14	163	F05/04
1-1/2"	38	120	59,5	14	14	18	188	F07/05
2"	50	140	68,5	14	14	18	188	F07/05
2-1/2"	64	185	92	17	17	22	350	F10/07
3"	76	205	101	17	17	22	350	F10/07
4"	94	240	133	22	22	28	350	F12/10



Installation and maintenance

Before installation:

Pipe-line must be cleaned and free from any residuals of welding, shaving, and every kind of contaminations.

Pipe-line must be perfectly aligned and its support properly dimensioned, to avoid external constraint.

Please, use the right product according to the service conditions to seal the valve.

Use the right bolt tightening so the connections won't be damaged.

Cleaning and tests:

Keep the valves open during the cleaning process, to ensure there are no impurities between the ball and the body.

Pressure tests must be done with a cleaned pipe-line.

Open the valves partially for the tests. Pressure test must not exceed the valve specifications according to EN 12266-1.

Maintenance:

It's recommended to operate the valve twice (open and close) 1 or 2 times a year.

When you need to perform any intervention on the valve, make sure the pipe-line is not under pressure, there is no fluid in it and it's isolated.

The temperature must be low enough to operate without risks.

If there is a corrosive fluid, inert installation before intervention.

When the valve is under pressure and there's a leakage at the packing, tighten it slightly so that the leakage disappears.