

A731 – FLANGED STAINLESS STEEL BALL VALVE



3.1

Properties

- 3pc execution
- Length according to DIN3202 F1
- Blow-out proof stem
- In-line maintenance
- Locking device
- Temperature: -20 – +180°C
- Body wall thickness: EN12516-1/2/3
- Flange dimension: EN 1092-1 PN40
- Face to face: EN558-1 F1
- Pressure testing: EN 12266



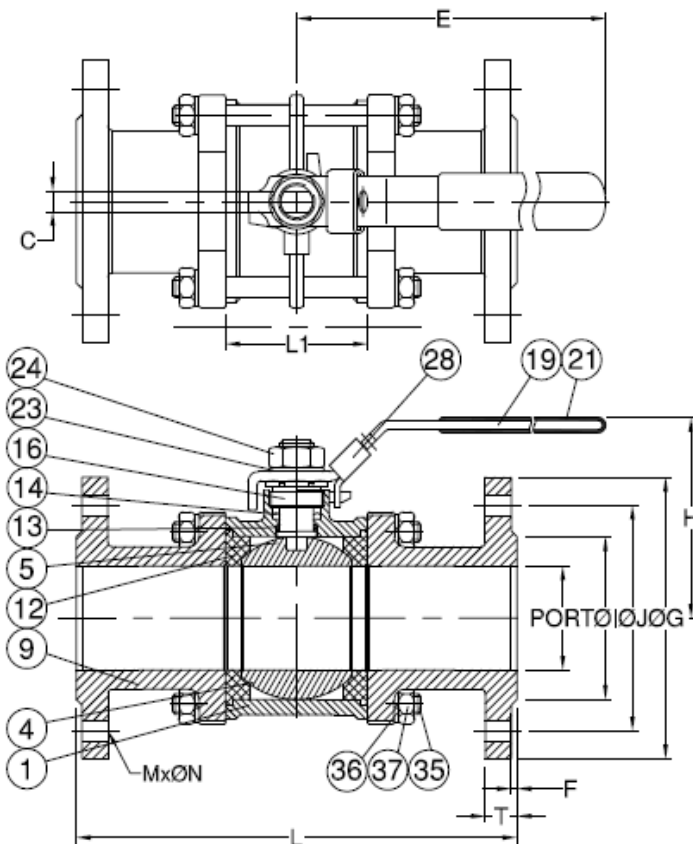
Application

Chemical and pharmaceutical industries, all medium suitable to the material quality of the product.

Materials and size

MATERIAL LIST

NO.	PART NAME	MATERIAL
1	BODY	1.4408 / EN1503-1
4	BALL	ASTM A351 Gr.CF8M
5	STEM	SS316
9	END CAP	1.4408 / EN1503-1
12	SEAT	PTFE
13	THRUST WASHER	PTFE
14	STEM PACKING	PTFE
16	GLAND NUT	SS304
19	HANDLE	SS304
21	HANDLE COVER	PLASTIC
23	HANDLE WASHER	SS304
24	HANDLE NUT	SS304
28	LOCKING DEVICE	SS304 (OPTION)
35	BODY BOLT	SS304
36	BOLT WASHER	SS304
37	BOLT NUT	SS304



DIMENSIONS

unit:mm

SIZE	PORT	L	L1	E	H	C	ØG	ØJ	ØI	T	F	MxØN	
DN15	1/2"	15.0	130.0	22.5	122.9	88.0	5.0	95.0	65.0	45.0	16.0	2.0	4xØ14.0
DN20	3/4"	20.0	150.0	27.5	122.9	91.0	5.0	105.0	75.0	58.0	18.0	2.0	4xØ14.0
DN25	1"	25.0	160.0	34.0	144.9	104.0	8.0	115.0	85.0	68.0	18.0	2.0	4xØ14.0
DN32	1-1/4"	32.0	180.0	42.5	144.9	108.0	8.0	140.0	100.0	78.0	18.0	2.0	4xØ18.0
DN40	1-1/2"	38.0	200.0	52.0	188.9	121.0	10.0	150.0	110.0	88.0	18.0	3.0	4xØ18.0
DN50	2"	50.0	230.0	63.5	188.9	129.0	10.0	165.0	125.0	102.0	20.0	3.0	4xØ18.0
DN65	2-1/2"	65.0	290.0	85.5	255.3	152.0	10.0	185.0	145.0	122.0	22.0	3.0	8xØ18.0
DN80	3"	80.0	310.0	102.0	260.8	160.0	12.0	200.0	160.0	138.0	24.0	3.0	8xØ18.0
DN100	4"	100.0	350.0	128.5	322.2	174.0	16.0	235.0	190.0	162.0	24.0	3.0	8xØ22.0

Installation and maintenance

Before installation:

Pipe-line must be cleaned and free from any residuals of welding, shaving, and every kind of contaminations.

Pipe-line must be perfectly aligned and its support properly dimensioned, to avoid external constraint.

Please, use the right product according to the service conditions to seal the valve.

Use the right bolt tightening so the connections

Cleaning and tests:

Keep the valves open during the cleaning process, to ensure there are no impurities between the ball and the body.

Pressure tests must be done with a cleaned pipe-line.

Open the valves partially for the tests. Pressure test must not exceed the valve specifications according to EN 12266-1.

Maintenance:

It's recommended to operate the valve twice (open and close) 1 or 2 times a year.

When you need to perform any intervention on the valve, make sure the pipe-line is not under pressure, there is no fluid in it and it's isolated.

The temperature must be low enough to operate without risks.

If there is a corrosive fluid, inert installation before intervention.

When the valve is under pressure and there's a leakage at the packing, tighten it slightly so that the leakage disappears.